

O'Loughlin are around, as they have a lot to offer with years of experience of the mine."

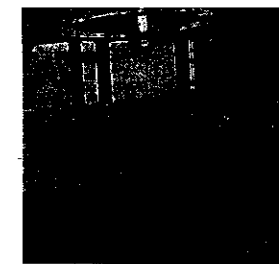
Originally from Brisbane, Michele holds a Bachelor of Arts degree from the University of Queensland, majoring in Industrial Relations.

She started with the company as a human resources graduate in February 1990, and spent six months at

paper soon detailing how the system works in practice.

One advantage of implementing the HR system was that I got to know every HR person, so I'm able to consult them for advice, if needed," she said.

Away from work, Michele's time is taken up with training at the gym with Goonyella/Riverside safety advisor Deborah Kelly.



Goonyella/Riverside's 1994 photograph: Kirsty Kearl, *eng* Greg Valler, *engineering tra* Morgan, *engineering trades* McCowan, *engineering trade* Warden, *engineering trades* Cassells, *engineering trades*

## Underground miner surfaces at Peak Downs

After varied experience in metalliferous mines around Australia, David Lawrence has returned to the central Queensland area where he began his career as a student mining engineer 13 years ago.

David, Peak Downs' new overburden engineer, was once a vacation student at Norwich Park.

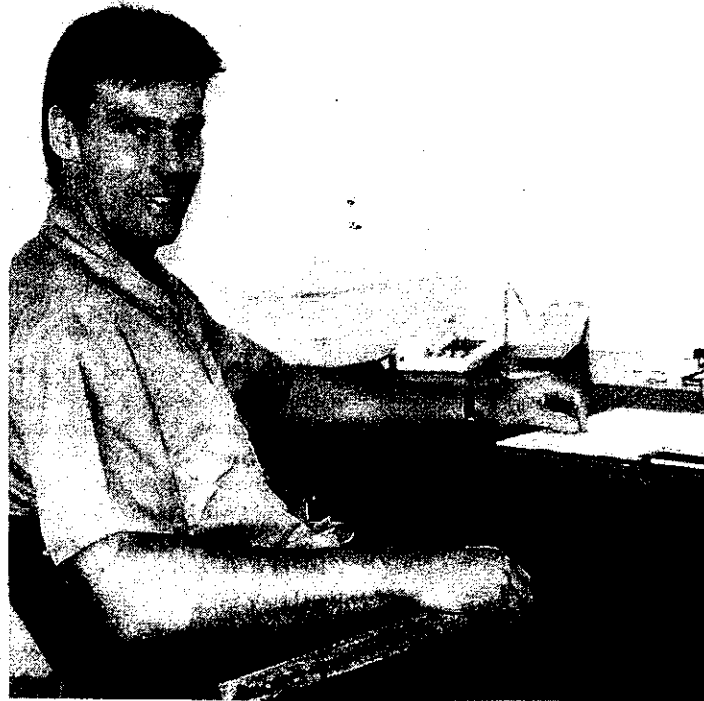
Born in Sydney, he completed his schooling in Brisbane, and began a bachelor of engineering degree at the University of Queensland.

### Mechanical to mining

"I started looking at mechanical engineering then changed to mining engineering," he said.

After doing some vacation work at Mount Isa, he started at Isa Mine as a trucker.

"I spent my first 12 months underground as graduate mining engineer, then six months supervising, mainly in MICA (lead-zinc) and the copper stopes.



lead open stopes for a further 18 months, the drilling and blasting department, and copper planning for 12 months.

"In March 1989 I started at Cadjebut in the Kimberleys as Senior Mining Engineer.

"It's worked on a fly-in, fly-out basis, with a home base in Broome. I flew in on Monday mornings, spent all week on site, then left at 2pm Fridays.

### Two flat line seams

We were working on two flat line seams of lead ore. almost like

"We had unique problems as the deposit was overlaid by a major aquifer (water duct)."

After flying in and out for five years, David felt it was time to settle down, and transferred to Peak Downs.

### Central Queensland connections

David and his wife Joanne, a former central highlands resident, have two children -- Kurt (2) and Kaitlyn (4 months).

Joanne plays in a touch team, while David enjoys a round of golf

## Distance to snowfields detrimental to skiing skill

The problem with being so far north of the snowfields, says Goonyella/Riverside's Sandra Mayne, is that you have to learn how to ski all over again each time you visit.

Sandra, who works in the Payroll Office, is planning her next assault on Falls Creek later this year.

She's been with the mine for 12 years, while her father Ernie, a dragline operator, and brother David, a truck driver, are both at Peak Downs.

"I started at Goonyella as an office junior in accounts, then moved to the warehouse, which incorporated some accounts work.

"My next posting was a lot of fun. Field maintenance was a completely different environment to accounts, and I think the guys found it a novelty to have a girl on site.

"I was 'number crunching' in statistics for a while, followed by a spell in the maintenance workshop, and finally the pay office.



"Each posting has been good experience, and that's a great help when you move to the next job," she said.

Sandra now looks after the daily input of payroll data.

"It's a job where getting it right makes everyone happy," she said.

In addition to travelling to the ski slopes, Sandra used to holiday with her sister Joanne in Broome.

"It's much easier now. She's moved to Moranbah with her husband David Lawrence, Peak Downs' new overburden engineer.

